

PRODUCT INFORMATION PACKET

Model No: 5KE49UN8376

Catalog No: K2037

Fan and Blower Motor, 3 HP, 3 Ph, 60 Hz, 208-230/460 V, 3600 RPM, 145T Frame, DP



Regal and Marathon are trademarks of Regal Rexnord Corporation or one of its affiliated companies.

©2024 Regal Rexnord Corporation, All Rights Reserved. MC017097E

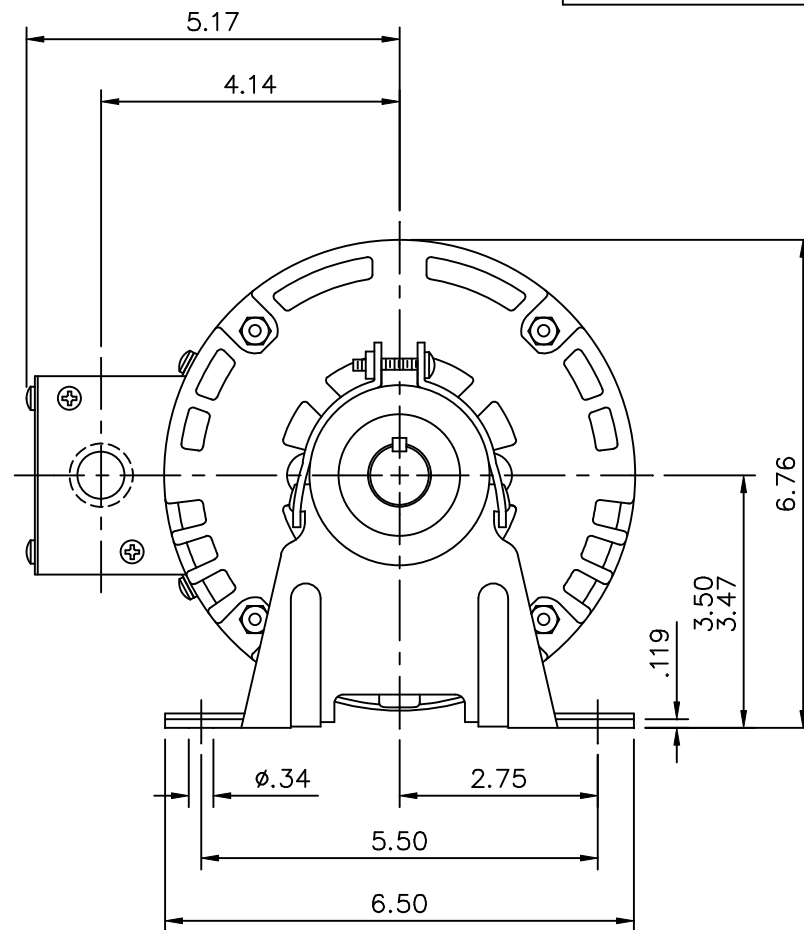
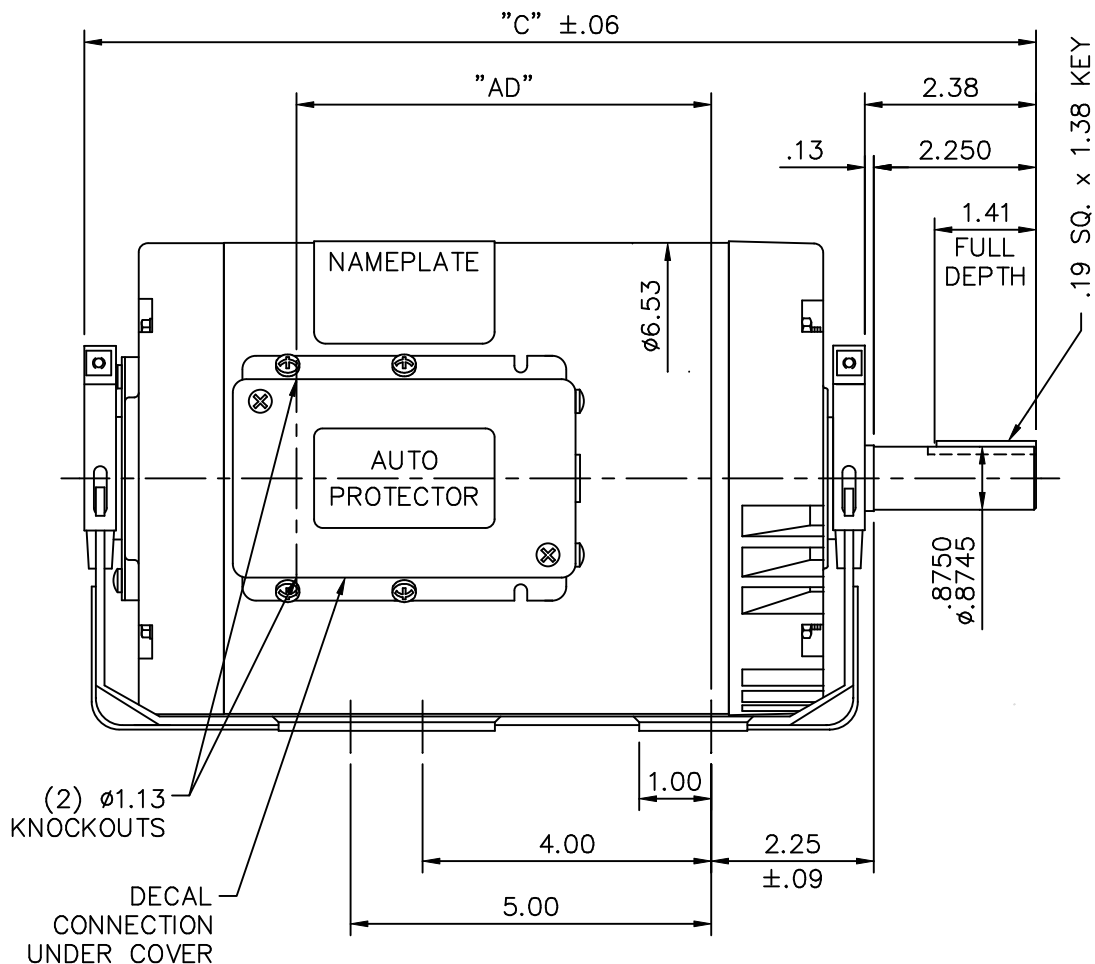


Nameplate Specifications

Phase	3	Output HP	3 Hp
Output KW	2.2 kW	Voltage	208-230/460 V
Speed	3450 rpm	Service Factor	1.0
Frame	145T	Enclosure	Drip Proof
Thermal Protection	Automatic	Efficiency	84 %
Ambient Temperature	40 °C	Frequency	60 Hz
Current	8.4-7.6/3.8 A	Power Factor	85
Duty	Continuous	Insulation Class	B
Design Code	B	KVA Code	J
Drive End Bearing Size	6205	Opp Drive End Bearing Size	6203
UL	Recognized (Not Protector)	CSA	Y
CE	N	IP Code	22
Number of Speeds	1		

Technical Specifications

Electrical Type	Squirrel Cage Induction Run	Starting Method	Across The Line
Poles	2	Rotation	Reversible
Mounting	Resilient Base	Motor Orientation	Nan
Drive End Bearing	Ball	Opp Drive End Bearing	Ball
Frame Material	Rolled Steel	Shaft Type	T
Overall Length	13.19 in	Frame Length	7.00 in
Shaft Diameter	0.875 in	Shaft Extension	2.25 in
Assembly/Box Mounting	NAN		
Outline Drawing	028683ME-700	Connection Drawing	005020.02ME

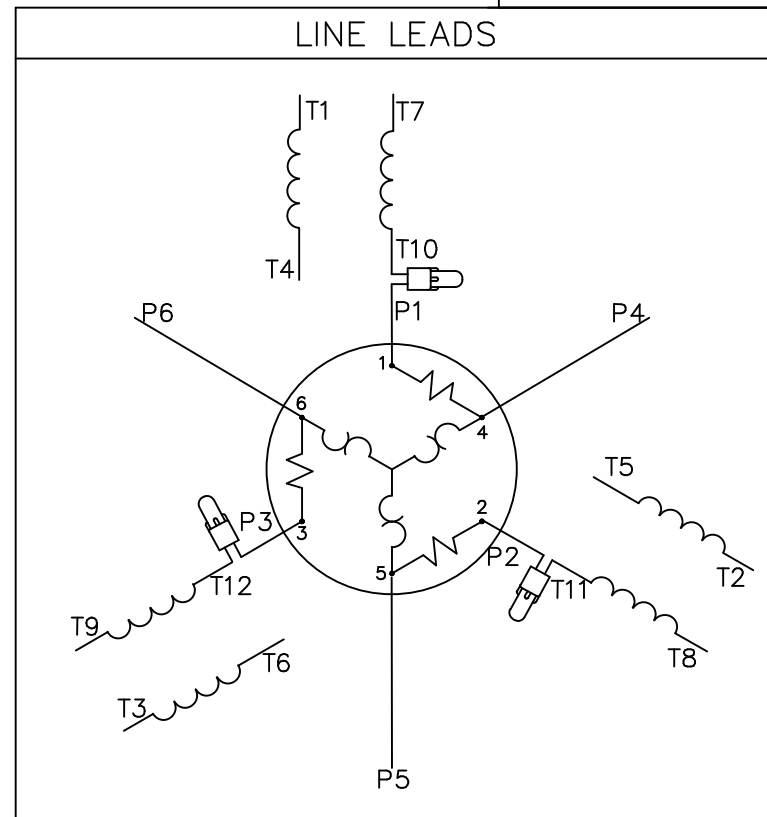
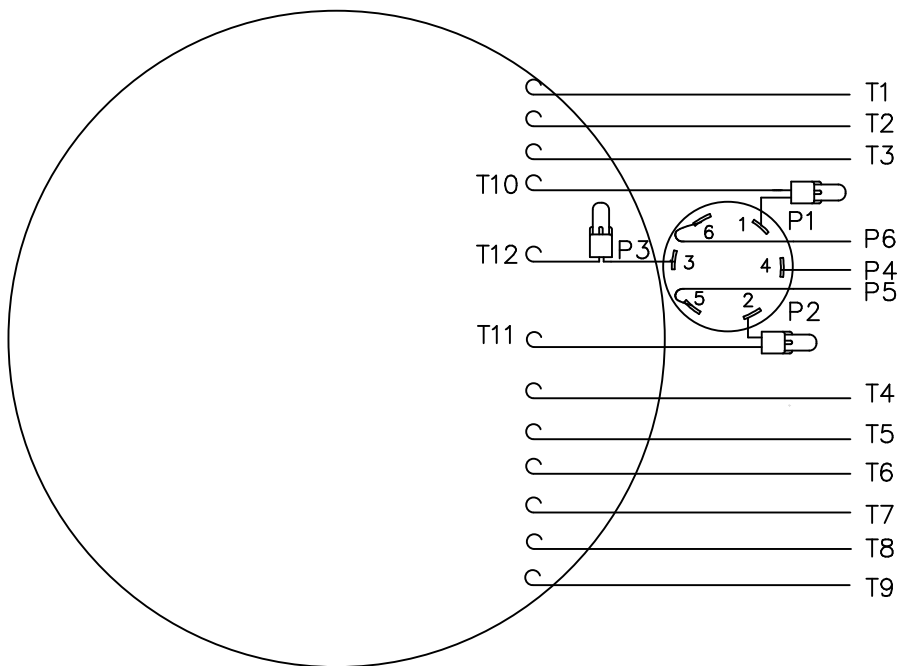


DASH NO.	"C"	"AD"
700	13.19	5.75
800	14.19	6.75

NO.		REVISION		BY & DATE		TOLERANCES UNLESS SPECIFIED			DRAWN LST 7/9/09		
						DEC.	INCHES		CHK		
						.X	±.1		APPD		
						.XX	±.03		TITLE	SCALE 3=8	
						.XXX	±.005		OUTLINE - 140T FRAME DRIP PROOF - RESILIENT	REF	
						.XXXX	±.0005	MAT'L.	FMF		
						ANG	±1/2°	FINISH	PREV		
						RFP	CAD FILE	028683ME	SIZE	DRAWING NO.	REV.
						DIST			A	028683ME	

THIS DRAWING IN DESIGN AND DETAIL IS OUR PROPERTY AND MUST NOT BE USED EXCEPT IN CONNECTION WITH OUR WORK ALL RIGHTS OF DESIGN AND INVENTION ARE RESERVED THIS IS AN ELECTRONICALLY GENERATED DOCUMENT - DO NOT SCALE THIS PRINT

VIEW FROM OUTSIDE OF MOTOR AT SWITCH END.



VOLTAGE	L1	L2	L3	JOIN	SEPARATE
HIGH	T1	T2	T3	(T4, T7) (T5, T8) (T6, T9)	(P4) (P5) (P6)
LOW	T1, T7	T2, T8	T3, T9	(T4, P4) (T5, P5) (T6, P6)	

				TOLERANCES UNLESS SPECIFIED				DRAWN LST 7/2/08			
				DEC.	INCHES			CHK			
				.X	±.1			APPD			
				.XX	±.01			SCALE 1=1			
				.XXX	±.005			REF			
				.XXXX	±.0005	MAT'L. DECAL - 004023		FMF			
NO.	REVISION	BY & DATE	CHK	ANG	±1/2'	FINISH		PREV			
THIS DRAWING IN DESIGN AND DETAIL IS OUR PROPERTY AND MUST NOT BE USED EXCEPT IN CONNECTION WITH OUR WORK ALL RIGHTS OF DESIGN AND INVENTION ARE RESERVED THIS IS AN ELECTRONICALLY GENERATED DOCUMENT - DO NOT SCALE THIS PRINT				RFP	CAD FILE 00502002ME			SIZE A	DRAWING NO. 005020-02ME	PAGE OF	REV.
				DIST							